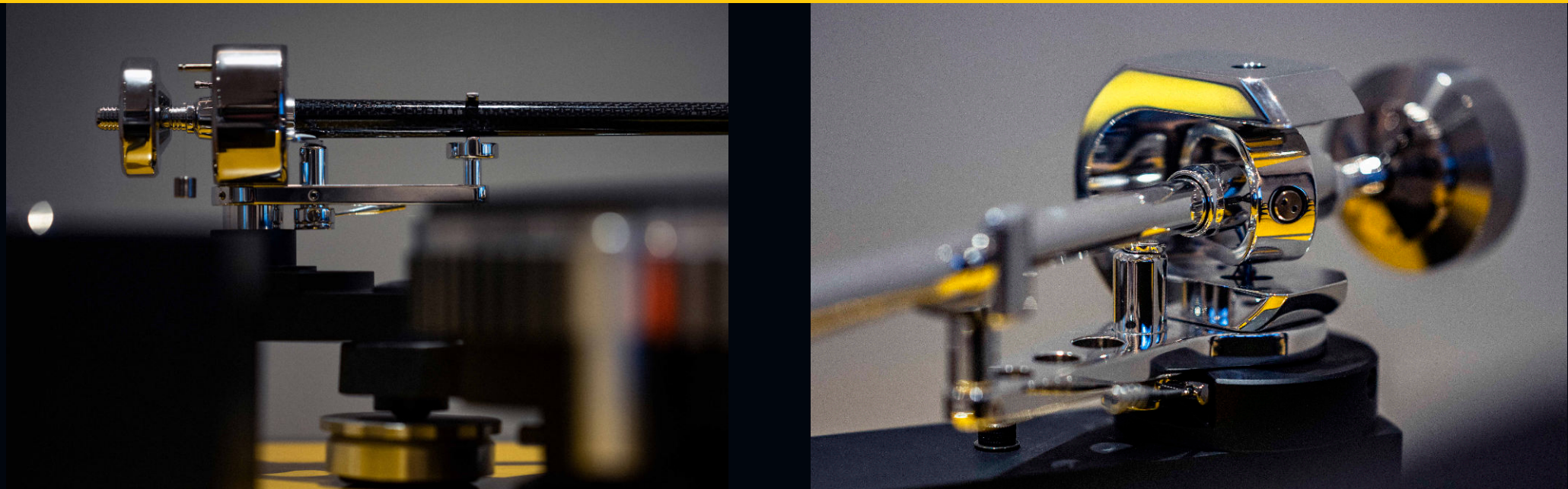


EVO TONEARM RANGE

Pro-Ject
AUDIO SYSTEMS



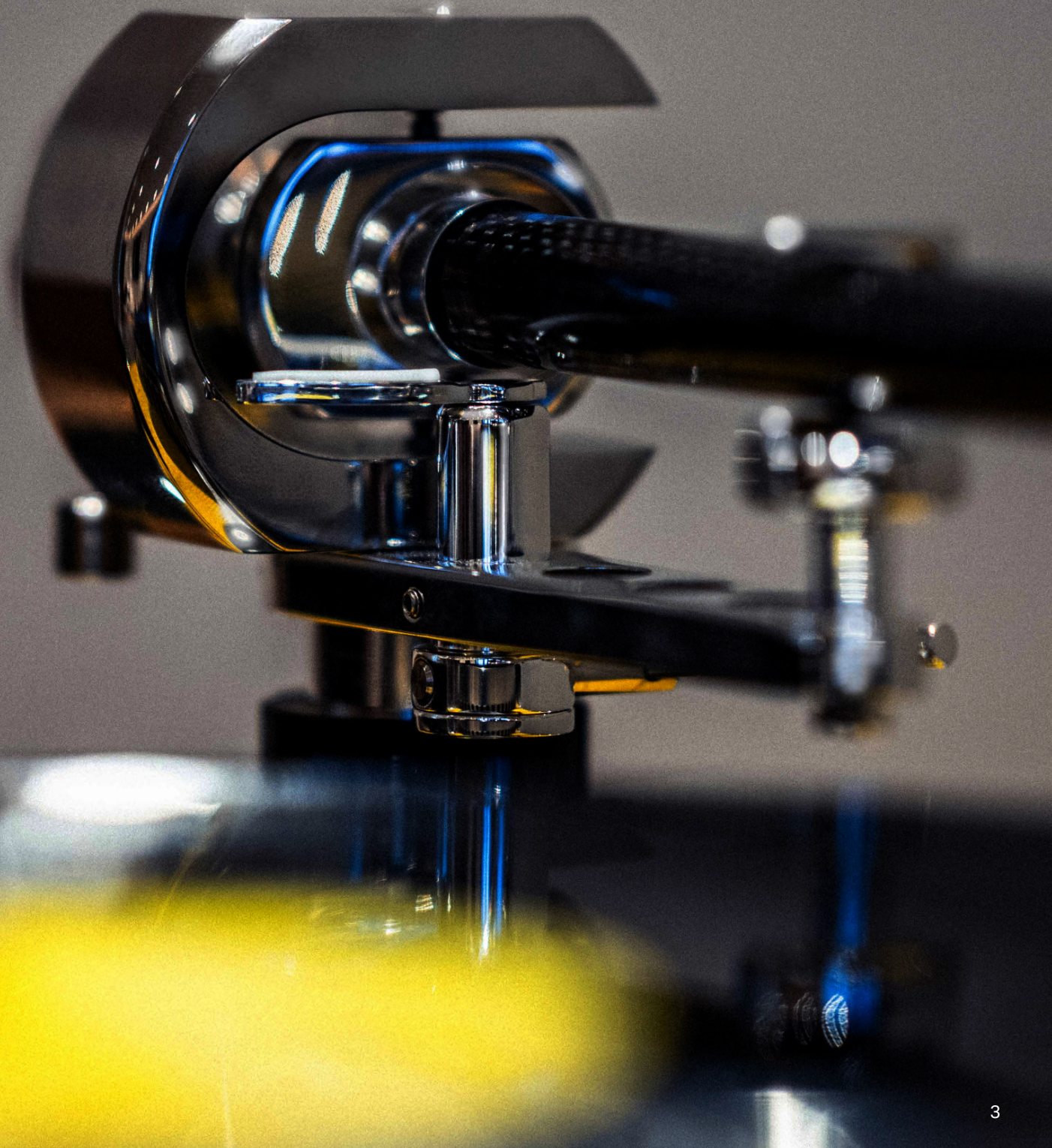
24 Tonearms.



Two tiers, three lengths,
two shapes, two finishes.

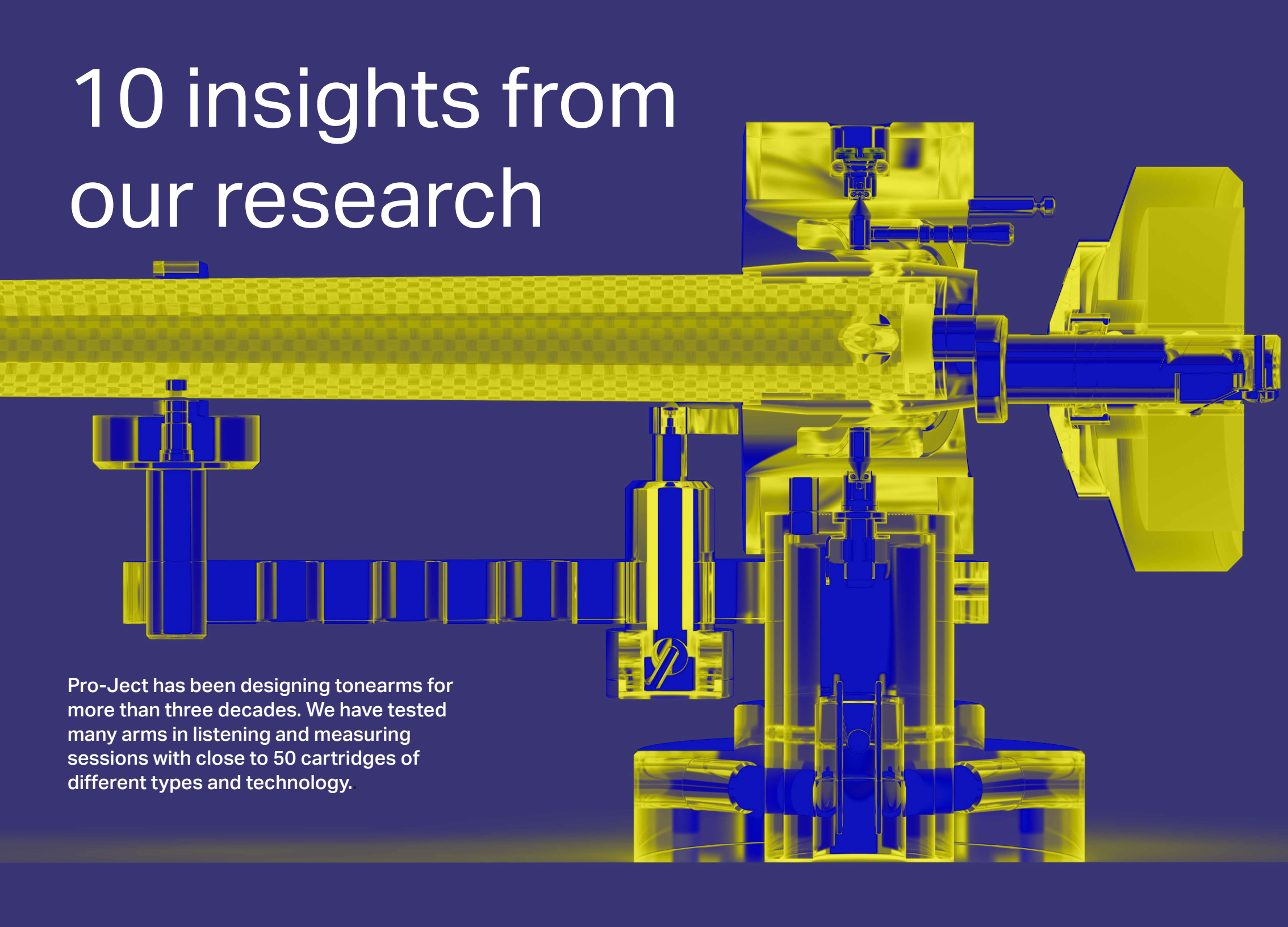
An Evolutionary Tonearm Range

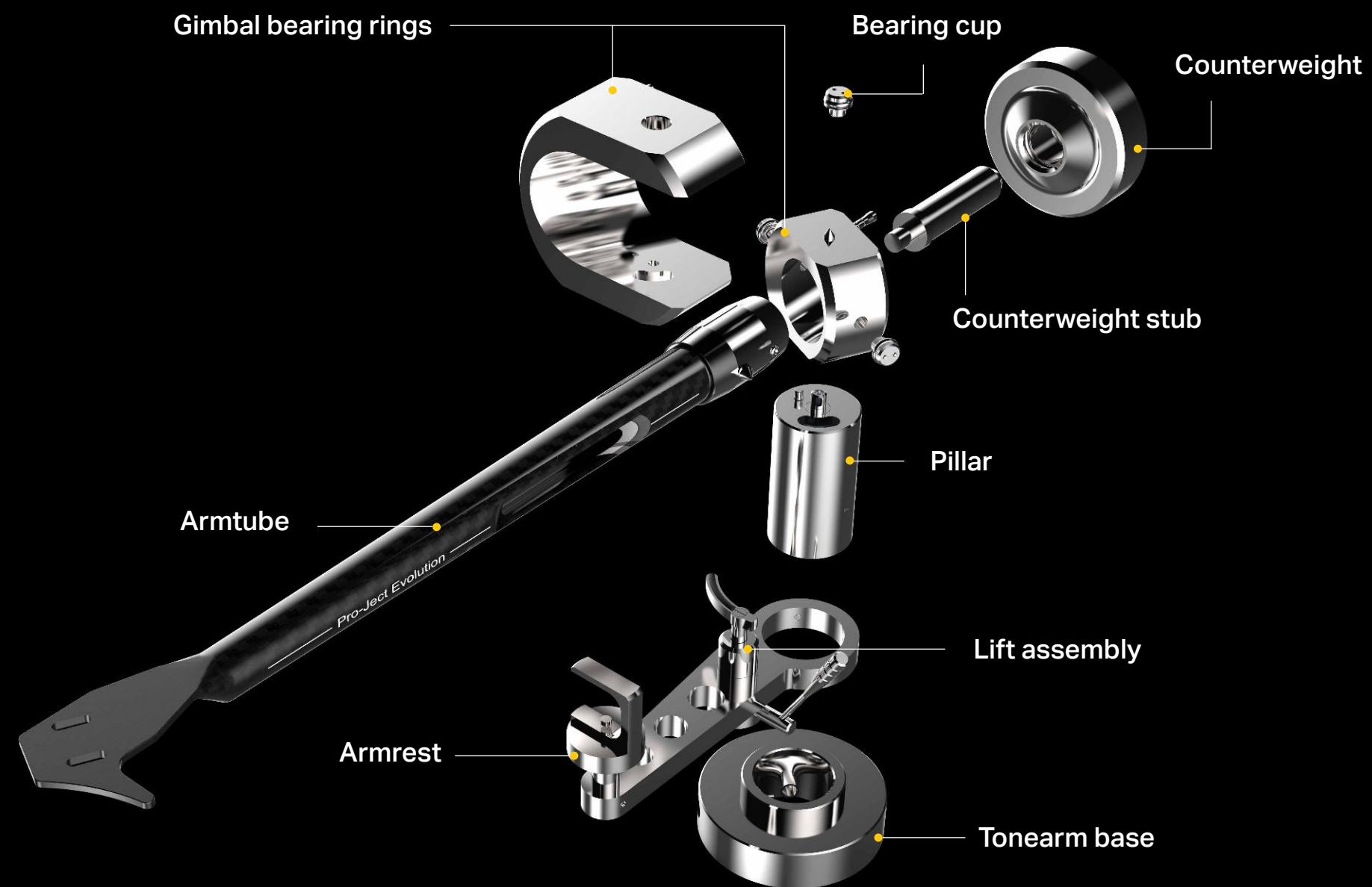
Our new EVO tonearm ranges employ two different quality level bearing blocks, two shapes, three lengths and two finishes. That gives you a total of 24 different arms to choose from.



10 insights from our research

Pro-Ject has been designing tonearms for more than three decades. We have tested many arms in listening and measuring sessions with close to 50 cartridges of different types and technology.

- 
01. Damped counterweights and super high mass bearing gimbals to dampen tonearm resonances.
 02. A conical tonearm tube design guarantees that resonances travel to the bearing block and also reduces the moving mass of the tonearm/headshell.
 03. Single-piece tonearm tubes increase the stiffness and also reduce the mass on the end of the tonearm and increase sound transparency.
 04. Correct tonearm and cartridge matching and the resulting cartridge/tonearm resonance are exceptionally critical for clean tracking and accurate controlled bass reproduction.
 05. For low compliance cartridges, you need tonearms with high effective mass, or in other words, tonearms made of aluminum alloys as opposed to carbon.
 06. High-purity conductors have a significant positive influence on low-level cartridge signals, so we use the highest purity copper and in the premium super clean silver wiring.
 07. High mass flange design is crucial to fix the tonearm securely to the turntable.
 08. Massive tonearm holder reduces the overall resonances of the whole tonearm.
 09. An assortment of different counterweights is necessary to balance the cartridge correctly. The counterweight needs to be as close as possible to the bearing for increased stability and low tonearm inertia.
 10. A precision arm can only be made with the highest level of diamond knife machinery, allowing within 1/1000 mm.



EVO Technology

The new EVO range is a big comprehensive family allowing you to find a tonearm with the effective mass and choice of materials that suits your cartridge the most. We offer the lightest options with a pure carbon tonearm tube to the slightly heavier carbon-aluminium sandwich constructions up to s-shape aluminium tonearms with SME-headshells allowing for fine-tuning the weight even more, by experimenting with different headshell materials. Available in 9", 10" and 12" lengths, standard black or hand-polished silver, and Premium versions with stainless steel bearing block, silver tonearm wiring, and improved bearing block and counterweight design, this is the most complete tonearm range on the market right now.

Based on these 10 points, we designed the NEW EVO Tonearm series. The central idea is the super high mass gimbals with the ultra-low friction 4-point Swiss-made bearing assembly. We have found the best technical solution: 4-pin-point cardan bearings. They are very stable and have low friction to guarantee a beautiful soundstage and clean tracking. If you have medium to low compliance cartridges, getting a better sound than from our EVO CC full carbon arm, as is featured on all our high-end products, is very difficult. However, for low-compliance cartridges it would be best to have more effective mass. For example: our carbon-aluminium or aluminium s-shape arms.

Straight

Our straight tonearms use a one-piece carbon fiber or carbon-aluminium tonearm tube.

Both constructions are lightweight and strong.

The carbon-aluminium sandwich construction in the straight premium arms uses the best characteristics of both materials. The extra aluminium layer on the inside helps to damp vibrations and adds effective mass. The arm tubes have a conical shape, which means they get thinner towards the headshell area.

This design avoids standing wave reflections.

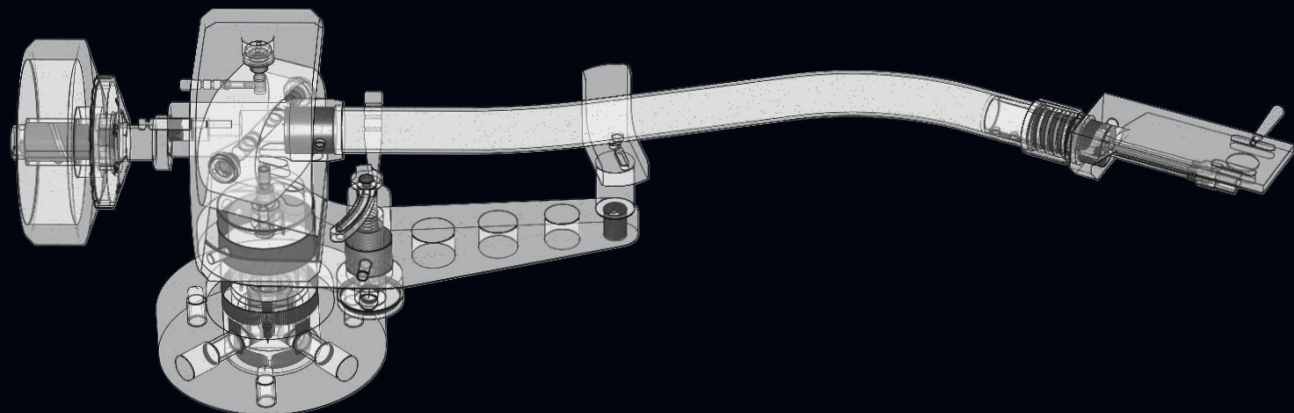
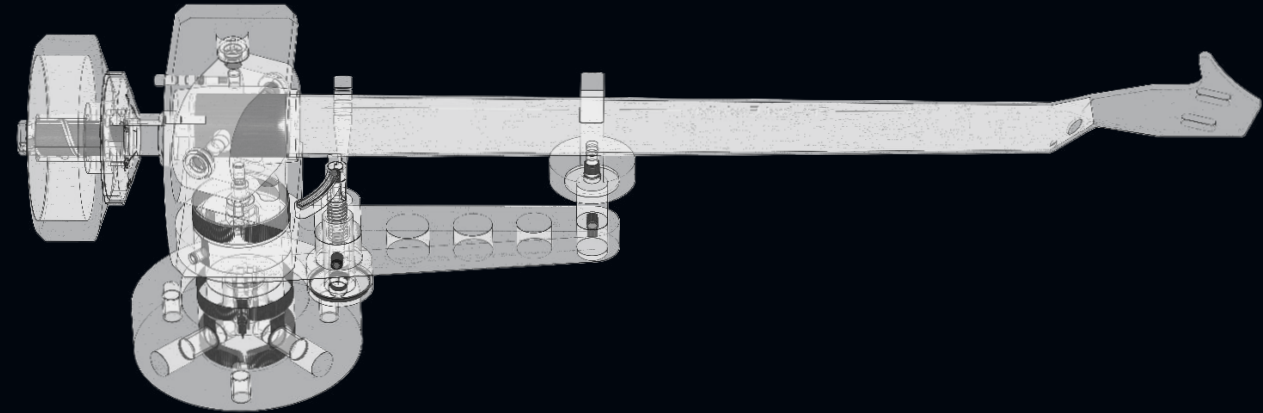
We recommend our CC EVO arms for high compliance cartridges and our CA EVO Premium arms for mid to low compliance cartridges.

S-Shape

Our s-shaped tonearms are not only an eye-catcher on every turntable, they also come with their own advantages. S-shape arms benefit from much less groove angle distortion and an excellent tracking ability. The SME headshell allows you to quickly change your cartridges. Our s-shape arms tend to have higher effective mass and are an excellent choice for low compliance cartridges. We also offer headshells made of different materials, all with their own different weights (carbon, aluminium, wood). This freedom of choice makes our s-shape tonearms the most versatile group on offer.

24 tonearms at a glance...

...for the perfect match.



STRAIGHT

S-SHAPE

EVO CC

- TONEARM EVO 9 CC BLACK
- TONEARM EVO 9 CC HG
- TONEARM EVO 10 CC BLACK
- TONEARM EVO 10 CC HG
- TONEARM EVO 12 CC BLACK
- TONEARM EVO 12 CC HG

EVO CA PREMIUM

- TONEARM EVO 9 CA PREMIUM BLACK
- TONEARM EVO 9 CA PREMIUM HG
- TONEARM EVO 10 CA PREMIUM BLACK
- TONEARM EVO 10 CA PREMIUM HG
- TONEARM EVO 12 CA PREMIUM BLACK
- TONEARM EVO 12 CA PREMIUM HG

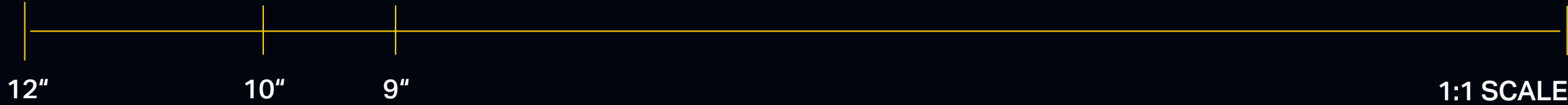
EVO AS

- TONEARM EVO 9 AS BLACK
- TONEARM EVO 9 AS HG
- TONEARM EVO 10 AS BLACK
- TONEARM EVO 10 AS HG
- TONEARM EVO 12 AS BLACK
- TONEARM EVO 12 AS HG

EVO AS PREMIUM

- TONEARM EVO 9 AS PREMIUM BLACK
- TONEARM EVO 9 AS PREMIUM HG
- TONEARM EVO 10 AS PREMIUM BLACK
- TONEARM EVO 10 AS PREMIUM HG
- TONEARM EVO 12 AS PREMIUM BLACK
- TONEARM EVO 12 AS PREMIUM HG

STRAIGHT
EVO CC BLACK



TONEARM EVO 9 CC BLACK



Lenght	Type	Finish	Tube
9 INCH	STRAIGHT	BLACK	CARBON

Effective tonearm length	230 mm
Mounting distance	212 mm
Offset angle	24°
Overhang	18 mm
Pitch of mounting grooves in headshell	12,7 mm
Effective tonearm mass	8 g
Cartridge weight	7-14 g
The range of the tracking force	0 - 3 g
The minimal null point	130,6 mm
The maximal null point	243,7 mm
Tonearm weight (without flange)	265g

TONEARM EVO 10 CC BLACK



Lenght	Type	Finish	Tube
10 INCH	STRAIGHT	BLACK	CARBON

Effective tonearm length	254 mm
Mounting distance	238 mm
Offset angle	21,4°
Overhang	16 mm
Pitch of mounting grooves in headshell	12,7 mm
Effective tonearm mass	8,5 g
Cartridge weight	6-14 g
The range of the tracking force	0 - 3 g
The minimal null point	126,8 mm
The maximal null point	248,2 mm
Tonearm weight (without flange)	269 g

TONEARM EVO 12 CC BLACK

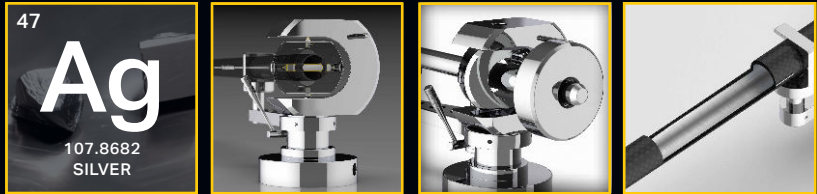


Lenght	Type	Finish	Tube
12 INCH	STRAIGHT	BLACK	CARBON

Effective tonearm length	304,8 mm
Mounting distance	291,6 mm
Offset angle	18°
Overhang	13,2 mm
Pitch of mounting grooves in headshell	12,7 mm
Effective tonearm mass	10,5 g
Cartridge weight	6-15 g
The range of the tracking force	0 - 3 g
The minimal null point	125 mm
The maximal null point	251,7 mm
Tonearm weight (without flange)	271 g

STRAIGHT

EVO CA BLACK PREMIUM



Comparison Standard vs Premium Page 32-35 >

Satin Black Finish



TONEARM EVO 9 CA BLACK PREMIUM



Lenght	Type	Finish	Tube Design
9 INCH	STRAIGHT	BLACK	ALU. / CARBON
Bearing	Cables	Materials	Counterweight
NEW DESIGN	SILVER WIRES	STAINL. STEEL	NEW DESIGN

Effective tonearm length	230 mm
Mounting distance	212 mm
Offset angle	24°
Overhang	18 mm
Pitch of mounting grooves in headshell	12,7 mm
Effective tonearm mass	15,5 g
Cartridge weight	7-18 g
The range of the tracking force	0 - 3 g
The minimal null point	130,6 mm
The maximal null point	243,7 mm
Tonearm weight (without flange)	506 g

TONEARM EVO 10 CA BLACK PREMIUM



Lenght	Type	Finish	Tube Design
10 INCH	STRAIGHT	BLACK	ALU. / CARBON
Bearing	Cables	Materials	Counterweight
NEW DESIGN	SILVER WIRES	STAINL. STEEL	NEW DESIGN

Effective tonearm length	254 mm
Mounting distance	238 mm
Offset angle	21,4°
Overhang	16 mm
Pitch of mounting grooves in headshell	12,7 mm
Effective tonearm mass	16,6 g
Cartridge weight	5-18 g
The range of the tracking force	0 - 3 g
The minimal null point	126,8 mm
The maximal null point	248,2 mm
Tonearm weight (without flange)	512 g

TONEARM EVO 12 CA BLACK PREMIUM

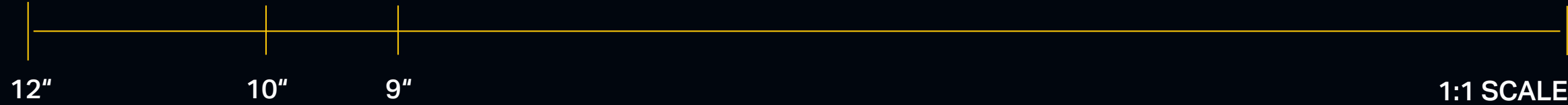
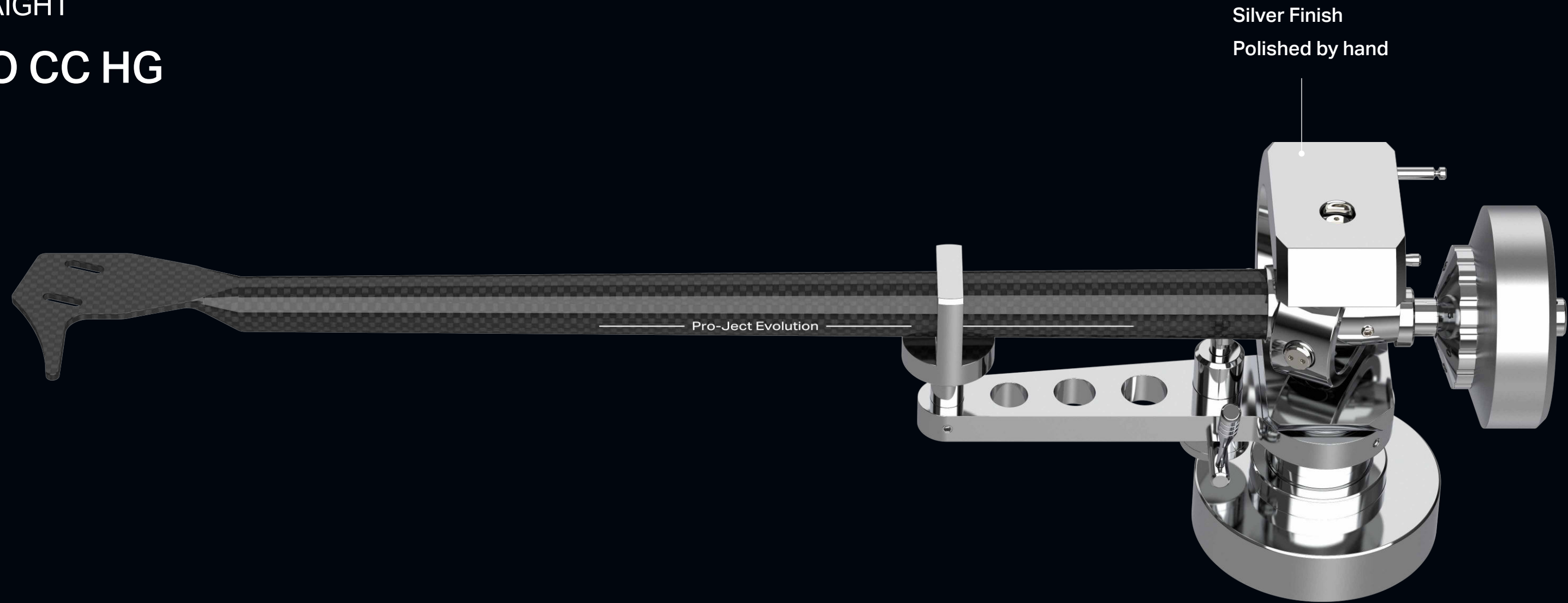


Lenght	Type	Finish	Tube Design
12 INCH	STRAIGHT	BLACK	ALU. / CARBON
Bearing	Cables	Materials	Counterweight
NEW DESIGN	SILVER WIRES	STAINL. STEEL	NEW DESIGN

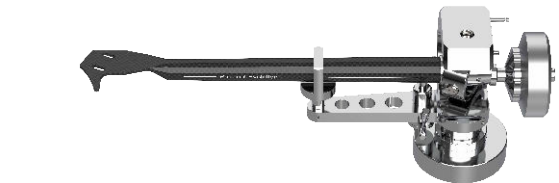
Effective tonearm length	304,8 mm
Mounting distance	291,6 mm
Offset angle	18°
Overhang	13,2 mm
Pitch of mounting grooves in headshell	12,7 mm
Effective tonearm mass	20,4 g
Cartridge weight	7-20 g
The range of the tracking force	0 - 3 g
The minimal null point	125 mm
The maximal null point	251,7 mm
Tonearm weight (without flange)	520 g

STRAIGHT

EVO CC HG



TONEARM EVO 9 CC HG



Lenght	Type	Finish	Tube
9 INCH	STRAIGHT	SILVER	CARBON

Effective tonearm length	230 mm
Mounting distance	212 mm
Offset angle	24°
Overhang	18 mm
Pitch of mounting grooves in headshell	12,7 mm
Effective tonearm mass	8 g
Cartridge weight	7-14 g
The range of the tracking force	0 - 3 g
The minimal null point	130,6 mm
The maximal null point	243,7 mm
Tonearm weight (without flange)	265g

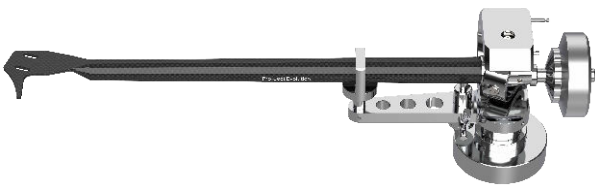
TONEARM EVO 10 CC HG



Lenght	Type	Finish	Tube
10 INCH	STRAIGHT	SILVER	CARBON

Effective tonearm length	254 mm
Mounting distance	238 mm
Offset angle	21,4°
Overhang	16 mm
Pitch of mounting grooves in headshell	12,7 mm
Effective tonearm mass	8,5 g
Cartridge weight	6-14 g
The range of the tracking force	0 - 3 g
The minimal null point	126,8 mm
The maximal null point	248,2 mm
Tonearm weight (without flange)	269 g

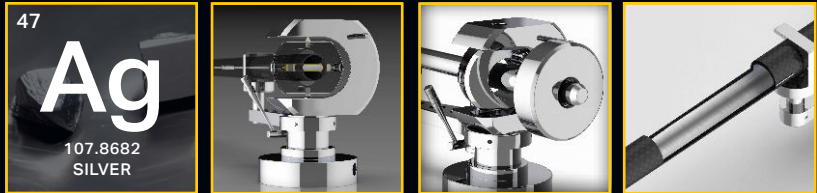
TONEARM EVO 12 CC HG



Lenght	Type	Finish	Tube
12 INCH	STRAIGHT	SILVER	CARBON

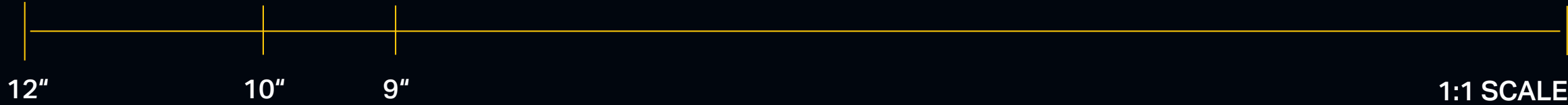
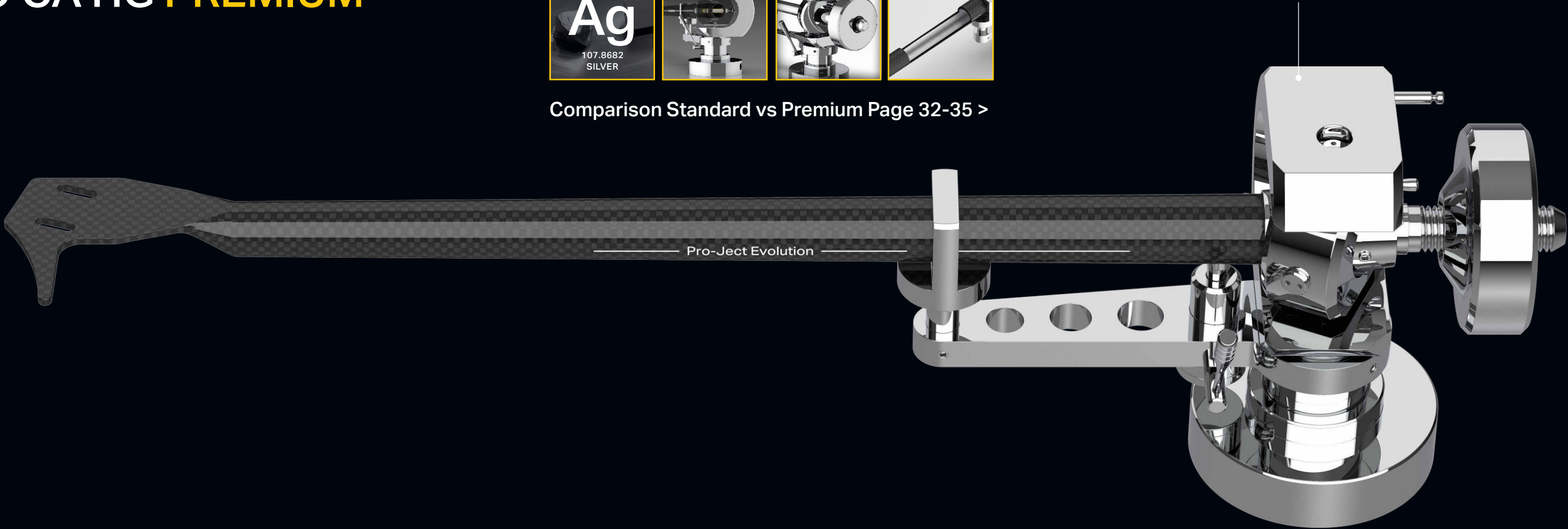
Effective tonearm length	304,8 mm
Mounting distance	291,6 mm
Offset angle	18°
Overhang	13,2 mm
Pitch of mounting grooves in headshell	12,7 mm
Effective tonearm mass	10,5 g
Cartridge weight	6-15 g
The range of the tracking force	0 - 3 g
The minimal null point	125 mm
The maximal null point	251,7 mm
Tonearm weight (without flange)	271 g

STRAIGHT
EVO CA HG PREMIUM



Comparison Standard vs Premium Page 32-35 >

Silver Finish
Polished by hand



TONEARM EVO 9 CA HG PREMIUM



Lenght	Type	Finish	Tube Design
9 INCH	STRAIGHT	SILVER	ALU. / CARBON
Bearing	Cables	Materials	Counterweight
NEW DESIGN	SILVER WIRES	STAINL. STEEL	NEW DESIGN

Effective tonearm length	230 mm
Mounting distance	212 mm
Offset angle	24°
Overhang	18 mm
Pitch of mounting grooves in headshell	12,7 mm
Effective tonearm mass	15,5 g
Cartridge weight	7-18 g
The range of the tracking force	0 - 3 g
The minimal null point	130,6 mm
The maximal null point	243,7 mm
Tonearm weight (without flange)	506 g

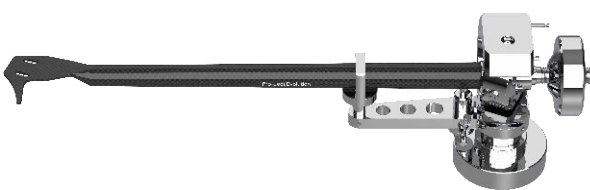
TONEARM EVO 10 CA HG PREMIUM



Lenght	Type	Finish	Tube Design
10 INCH	STRAIGHT	SILVER	ALU. / CARBON
Bearing	Cables	Materials	Counterweight
NEW DESIGN	SILVER WIRES	STAINL. STEEL	NEW DESIGN

Effective tonearm length	254 mm
Mounting distance	238 mm
Offset angle	21,4°
Overhang	16 mm
Pitch of mounting grooves in headshell	12,7 mm
Effective tonearm mass	16,6 g
Cartridge weight	5-18 g
The range of the tracking force	0 - 3 g
The minimal null point	126,8 mm
The maximal null point	248,2 mm
Tonearm weight (without flange)	512 g

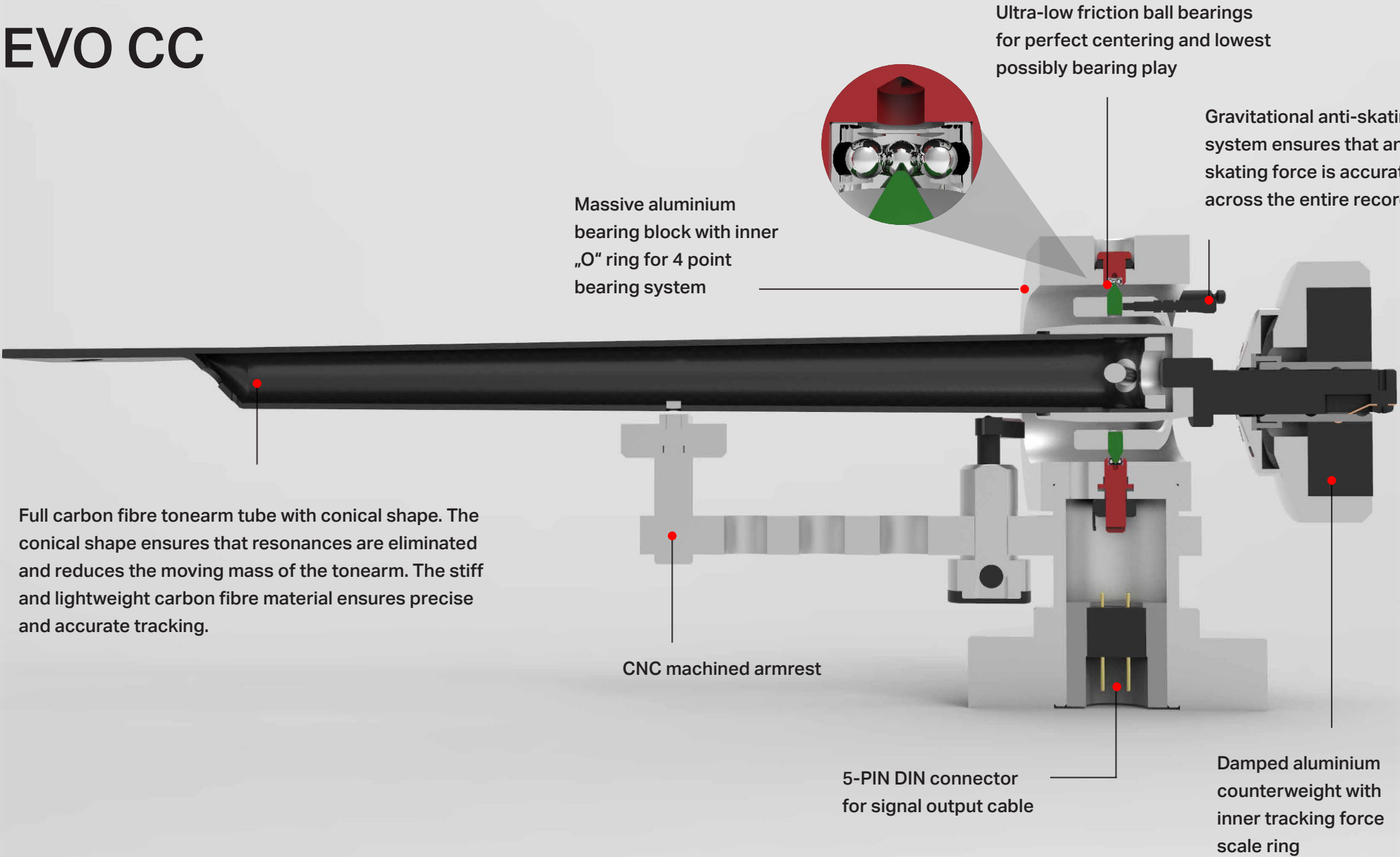
TONEARM EVO 12 CA HG PREMIUM



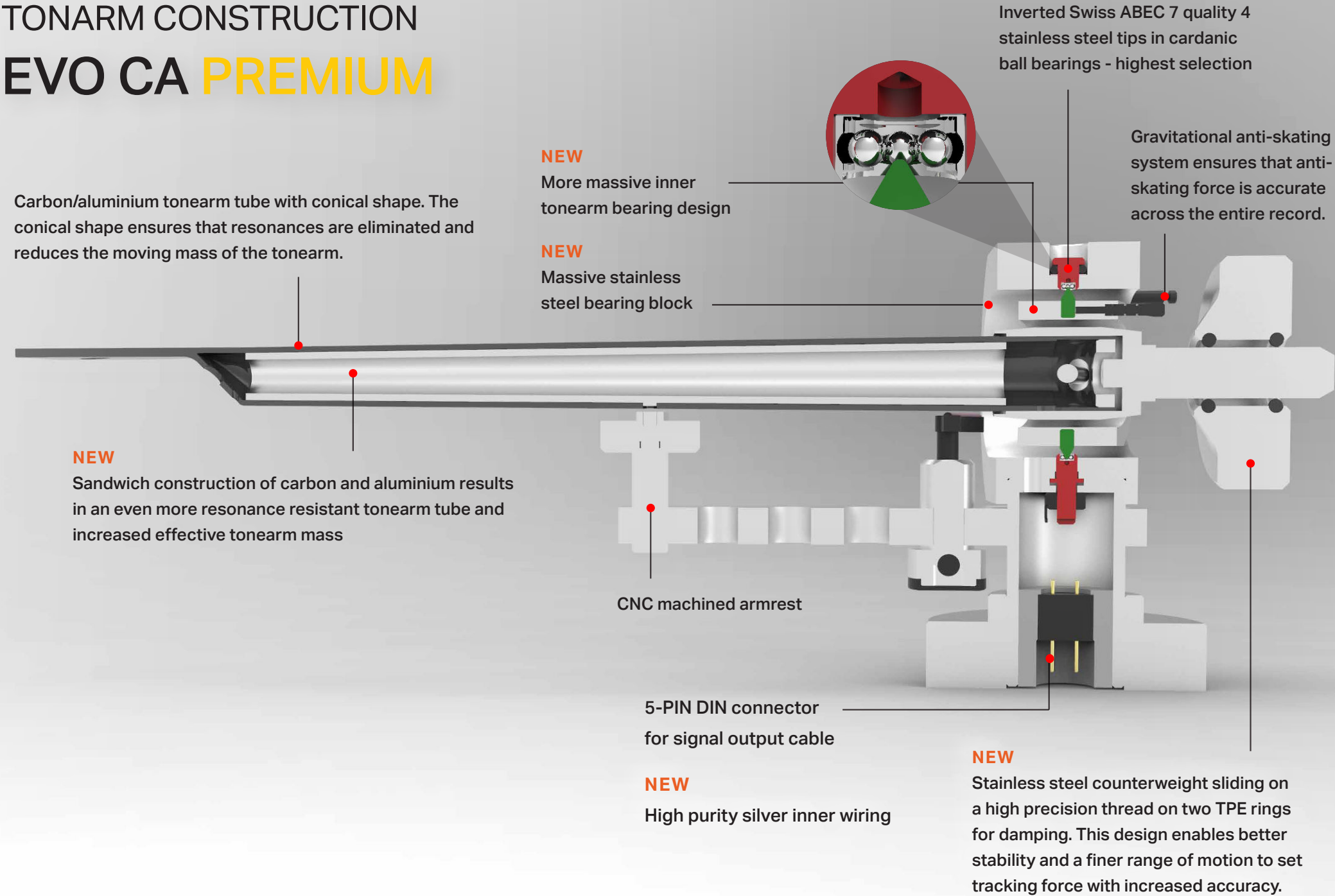
Lenght	Type	Finish	Tube Design
12 INCH	STRAIGHT	SILVER	ALU. / CARBON
Bearing	Cables	Materials	Counterweight
NEW DESIGN	SILVER WIRES	STAINL. STEEL	NEW DESIGN

Effective tonearm length	304,8 mm
Mounting distance	291,6 mm
Offset angle	18°
Overhang	13,2 mm
Pitch of mounting grooves in headshell	12,7 mm
Effective tonearm mass	20,4 g
Cartridge weight	7-20 g
The range of the tracking force	0 - 3 g
The minimal null point	125 mm
The maximal null point	251,7 mm
Tonearm weight (without flange)	520 g

TONARM CONSTRUCTION
EVO CC

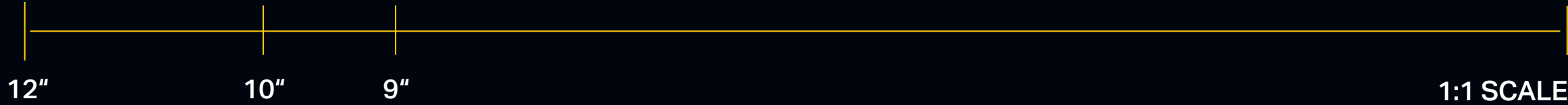


TONARM CONSTRUCTION
EVO CA PREMIUM



S-SHAPE

EVO AS BLACK



TONEARM EVO 9 AS BLACK



Lenght	Type	Finish	Tube
9 INCH	S-SHAPE	BLACK	ALUMINIUM

Effective tonearm length	230 mm
Mounting distance	212 mm
Offset angle	24°
Overhang	18 mm
Pitch of mounting grooves in headshell	12,7 mm
Effective tonearm mass with/no hs	24,2/10,6 g
Cartridge weight	6,5-16 g
The range of the tracking force	0 - 3 g
The minimal null point	130,6 mm
The maximal null point	243,7 mm
Tonearm weight (without flange)	303 g

TONEARM EVO 10 AS BLACK



Lenght	Type	Finish	Tube
10 INCH	S-SHAPE	BLACK	ALUMINIUM

Effective tonearm length	254 mm
Mounting distance	238 mm
Offset angle	21,4°
Overhang	16 mm
Pitch of mounting grooves in headshell	12,7 mm
Effective tonearm mass with/no hs	25/11,7 g
Cartridge weight	6,5-18 g
The range of the tracking force	0 - 3 g
The minimal null point	126,8 mm
The maximal null point	248,2 mm
Tonearm weight (without flange)	305 g

TONEARM EVO 12 AS BLACK

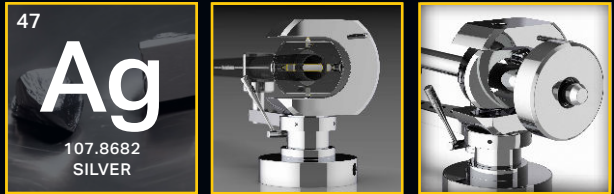


Lenght	Type	Finish	Tube
12 INCH	S-SHAPE	BLACK	ALUMINIUM

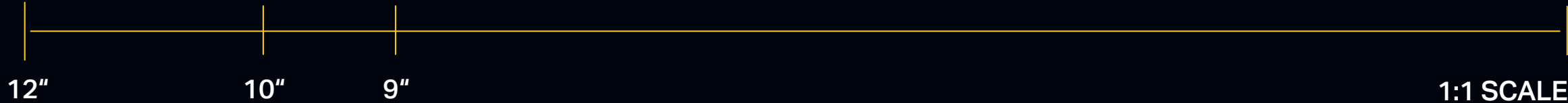
Effective tonearm length	304,8 mm
Mounting distance	291,6 mm
Offset angle	18°
Overhang	13,2 mm
Pitch of mounting grooves in headshell	12,7 mm
Effective tonearm mass with/no hs	28,1/14,5 g
Cartridge weight	7-22 g
The range of the tracking force	0 - 3 g
The minimal null point	125 mm
The maximal null point	251,7 mm
Tonearm weight (without flange)	311 g

S-SHAPE

EVO AS BLACK PREMIUM



Comparison Standard vs Premium Page 32-35 >



TONEARM EVO 9 AS BLACK PREMIUM



Lenght	Type	Finish	Tube Design
9 INCH	S-SHAPE	BLACK	ALUMINUM
Bearing	Cables	Materials	Counterweight
NEW DESIGN	SILVER WIRES	STAINL. STEEL	NEW DESIGN

Effective tonearm length	230 mm
Mounting distance	212 mm
Offset angle	24°
Overhang	18 mm
Pitch of mounting grooves in headshell	12,7 mm
Effective tonearm mass with/no hs	24,2/10,6 g
Cartridge weight	6,5-16 g
The range of the tracking force	0 - 3 g
The minimal null point	130,6 mm
The maximal null point	243,7 mm
Tonearm weight (without flange)	506 g

TONEARM EVO 10 AS BLACK PREMIUM



Lenght	Type	Finish	Tube Design
10 INCH	S-SHAPE	BLACK	ALUMINUM
Bearing	Cables	Materials	Counterweight
NEW DESIGN	SILVER WIRES	STAINL. STEEL	NEW DESIGN

Effective tonearm length	254 mm
Mounting distance	238 mm
Offset angle	21,4°
Overhang	16 mm
Pitch of mounting grooves in headshell	12,7 mm
Effective tonearm mass with/no hs	25/11,7 g
Cartridge weight	6,5-18 g
The range of the tracking force	0 - 3 g
The minimal null point	126,8 mm
The maximal null point	248,2 mm
Tonearm weight (without flange)	507 g

TONEARM EVO 12 AS BLACK PREMIUM

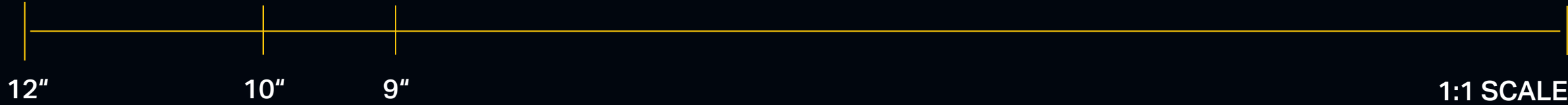


Lenght	Type	Finish	Tube Design
12 INCH	S-SHAPE	BLACK	ALUMINUM
Bearing	Cables	Materials	Counterweight
NEW DESIGN	SILVER WIRES	STAINL. STEEL	NEW DESIGN

Effective tonearm length	304,8 mm
Mounting distance	291,6 mm
Offset angle	18°
Overhang	13,2 mm
Pitch of mounting grooves in headshell	12,7 mm
Effective tonearm mass with/no hs	28,1/14,5 g
Cartridge weight	7-22 g
The range of the tracking force	0 - 3 g
The minimal null point	125 mm
The maximal null point	251,7 mm
Tonearm weight (without flange)	510 g

S-SHAPE

EVO AS HG



1:1 SCALE

TONEARM EVO 9 AS HG



Lenght	Type	Finish	Tube
9 INCH	S-SHAPE	BLACK	ALUMINIUM

Effective tonearm length	230 mm
Mounting distance	212 mm
Offset angle	24°
Overhang	18 mm
Pitch of mounting grooves in headshell	12,7 mm
Effective tonearm mass with/no hs	24,2/10,6 g
Cartridge weight	6,5-16 g
The range of the tracking force	0 - 3 g
The minimal null point	130,6 mm
The maximal null point	243,7 mm
Tonearm weight (without flange)	303 g

TONEARM EVO 10 AS HG



Lenght	Type	Finish	Tube
10 INCH	S-SHAPE	BLACK	ALUMINIUM

Effective tonearm length	254 mm
Mounting distance	238 mm
Offset angle	21,4°
Overhang	16 mm
Pitch of mounting grooves in headshell	12,7 mm
Effective tonearm mass with/no hs	25/11,7 g
Cartridge weight	6,5-18 g
The range of the tracking force	0 - 3 g
The minimal null point	126,8 mm
The maximal null point	248,2 mm
Tonearm weight (without flange)	305 g

TONEARM EVO 12 AS HG

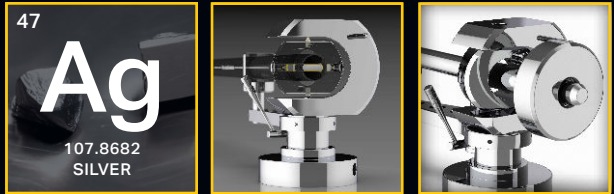


Lenght	Type	Finish	Tube
12 INCH	S-SHAPE	BLACK	ALUMINIUM

Effective tonearm length	304,8 mm
Mounting distance	291,6 mm
Offset angle	18°
Overhang	13,2 mm
Pitch of mounting grooves in headshell	12,7 mm
Effective tonearm mass with/no hs	28,1/14,5 g
Cartridge weight	7-22 g
The range of the tracking force	0 - 3 g
The minimal null point	125 mm
The maximal null point	251,7 mm
Tonearm weight (without flange)	311 g

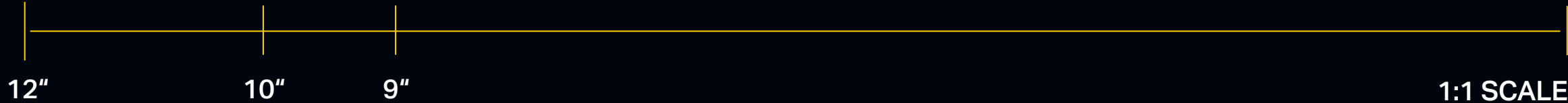
S-SHAPE

EVO AS HG PREMIUM



Comparison Standard vs Premium Page 32-35 >

Silver Finish
Polished by hand



TONEARM EVO 9 AS HG PREMIUM



Lenght	Type	Finish	Tube Design
9 INCH	S-SHAPE	SILVER	ALUMINUM
Bearing	Cables	Materials	Counterweight
NEW DESIGN	SILVER WIRES	STAINL. STEEL	NEW DESIGN

Effective tonearm length	230 mm
Mounting distance	212 mm
Offset angle	24°
Overhang	18 mm
Pitch of mounting grooves in headshell	12,7 mm
Effective tonearm mass with/no hs	24,2/10,6 g
Cartridge weight	6,5-16 g
The range of the tracking force	0 - 3 g
The minimal null point	130,6 mm
The maximal null point	243,7 mm
Tonearm weight (without flange)	506 g

TONEARM EVO 10 AS HG PREMIUM



Lenght	Type	Finish	Tube Design
10 INCH	S-SHAPE	SILVER	ALUMINUM
Bearing	Cables	Materials	Counterweight
NEW DESIGN	SILVER WIRES	STAINL. STEEL	NEW DESIGN

Effective tonearm length	254 mm
Mounting distance	238 mm
Offset angle	21,4°
Overhang	16 mm
Pitch of mounting grooves in headshell	12,7 mm
Effective tonearm mass with/no hs	25/11,7 g
Cartridge weight	6,5-18 g
The range of the tracking force	0 - 3 g
The minimal null point	126,8 mm
The maximal null point	248,2 mm
Tonearm weight (without flange)	507 g

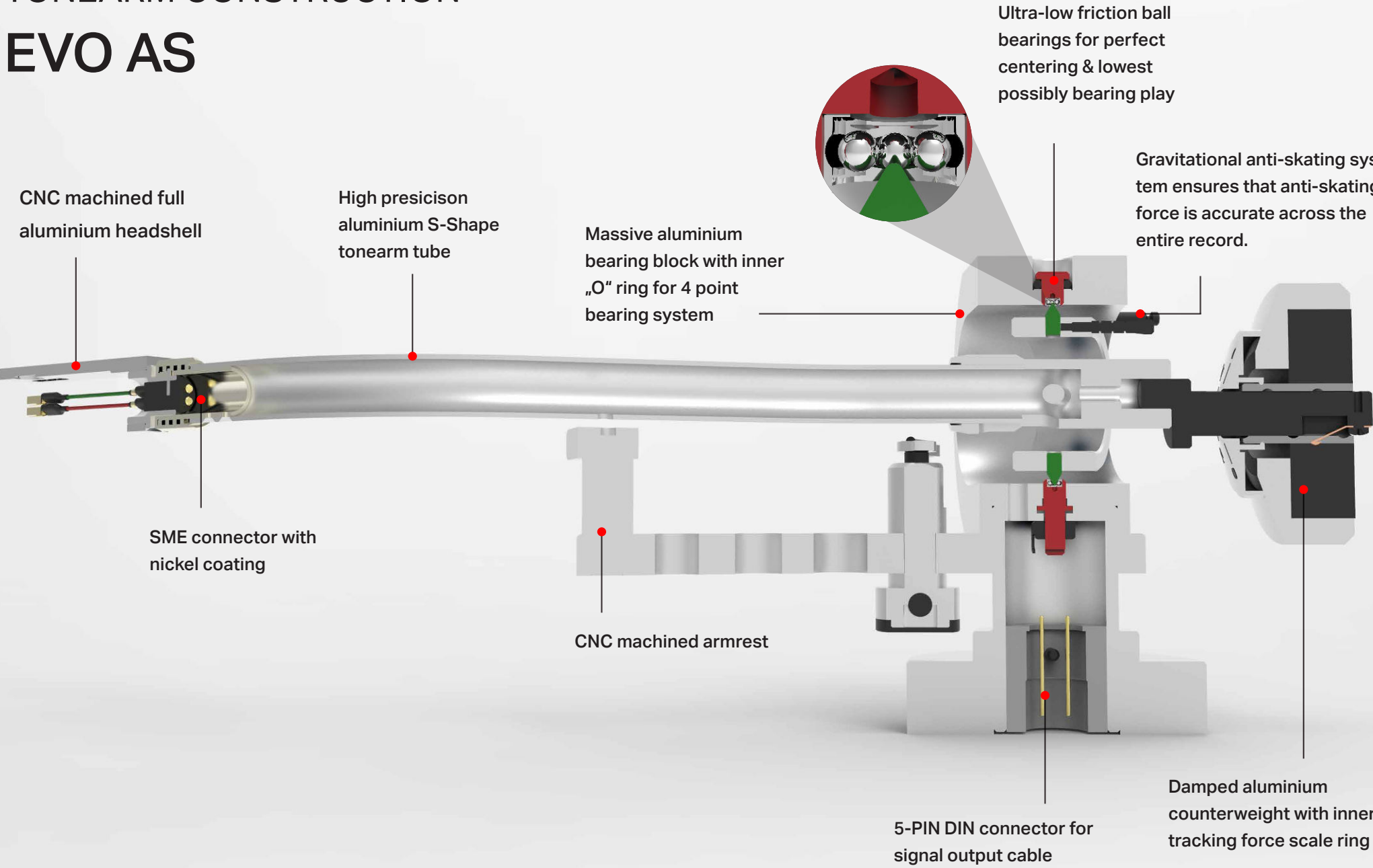
TONEARM EVO 12 AS HG PREMIUM



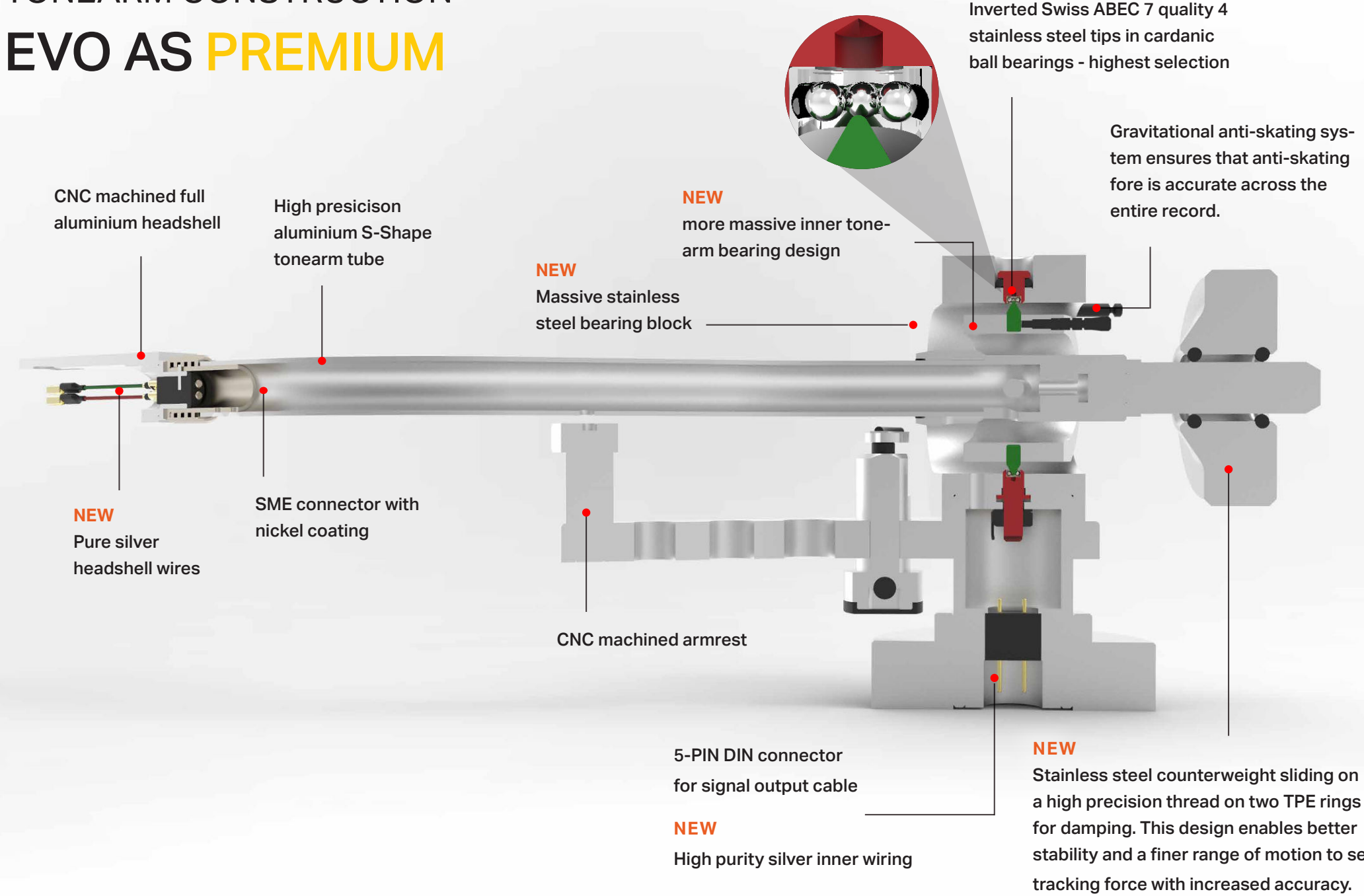
Lenght	Type	Finish	Tube Design
12 INCH	S-SHAPE	SILVER	ALUMINUM
Bearing	Cables	Materials	Counterweight
NEW DESIGN	SILVER WIRES	STAINL. STEEL	NEW DESIGN

Effective tonearm length	304,8 mm
Mounting distance	291,6 mm
Offset angle	18°
Overhang	13,2 mm
Pitch of mounting grooves in headshell	12,7 mm
Effective tonearm mass with/no hs	28,1/14,5 g
Cartridge weight	7-22 g
The range of the tracking force	0 - 3 g
The minimal null point	125 mm
The maximal null point	251,7 mm
Tonearm weight (without flange)	510 g

TONEARM CONSTRUCTION
 EVO AS

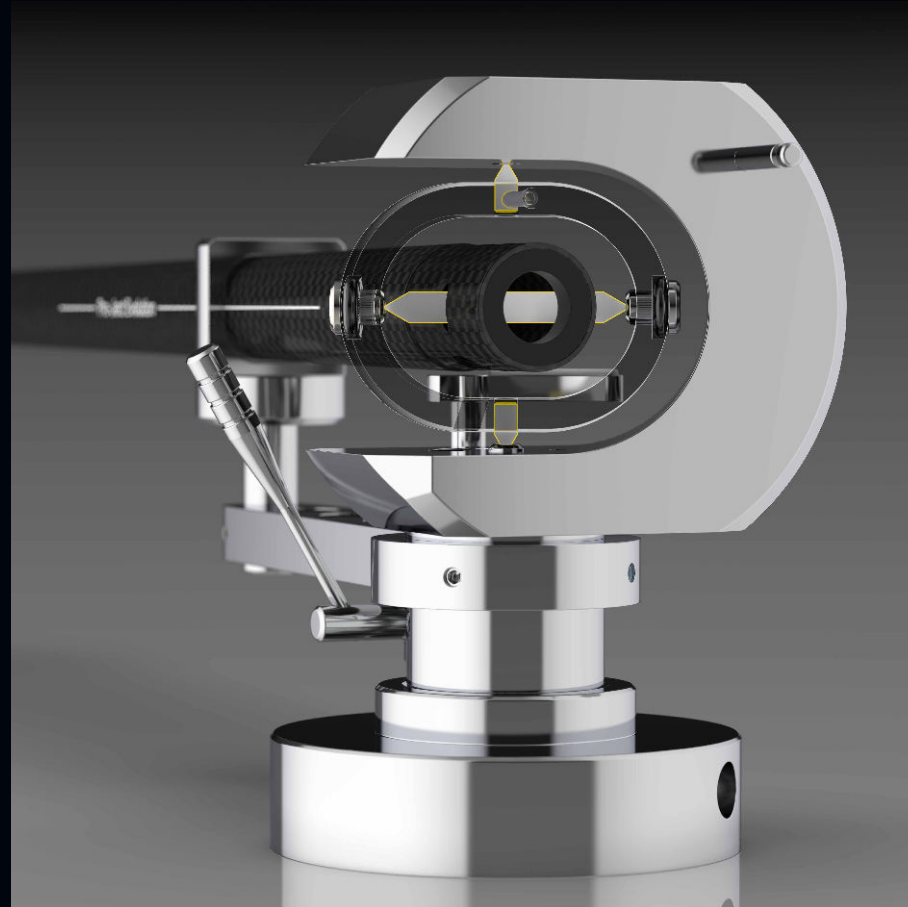


TONEARM CONSTRUCTION
 EVO AS PREMIUM



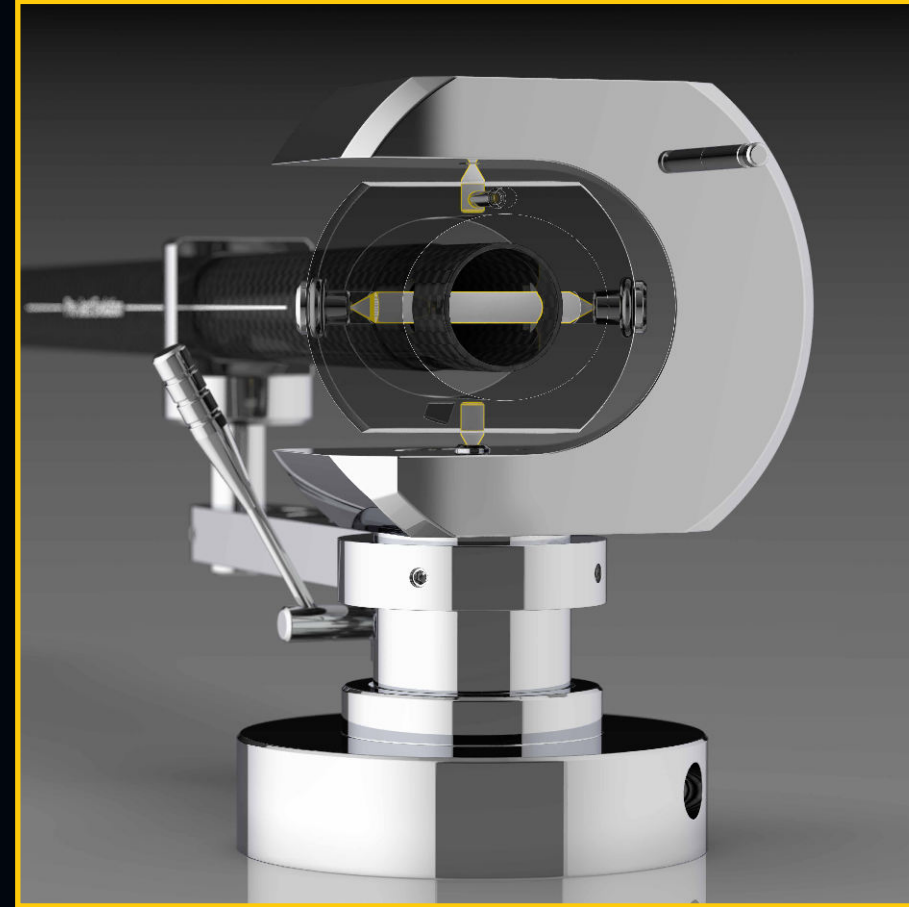
Tonearm bearing

STANDARD



Inverted ABEC 7 quality 4 stainless steel tips in cardanic ball bearings

PREMIUM



Inverted swiss ABEC 7 quality 4 stainless steel tips in cardanic ball bearings - highest selection

Counterweight and Bearing Block

STANDARD



1 Bearing Block: Aluminium
2 Counterweight: TPE damped

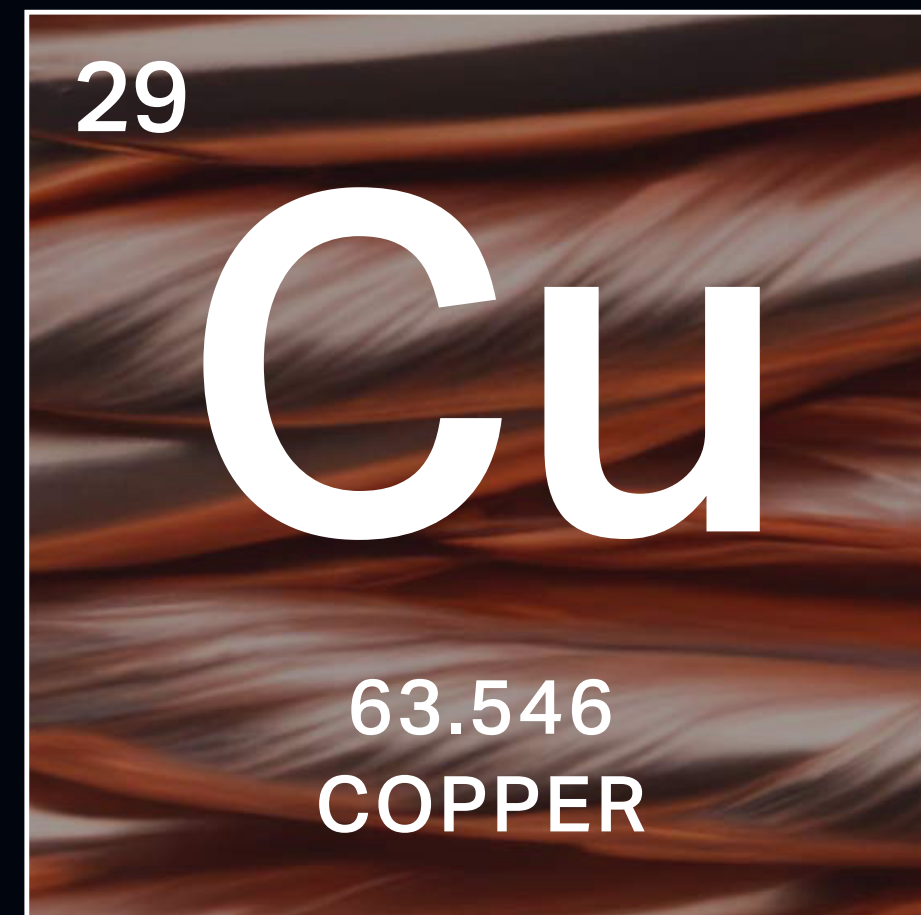
PREMIUM



1 Bearing block: New design and Stainless Steel construction
2 Counterweight: Concealed TPE - new design

Wiring and Cartridge Leads

STANDARD



PREMIUM



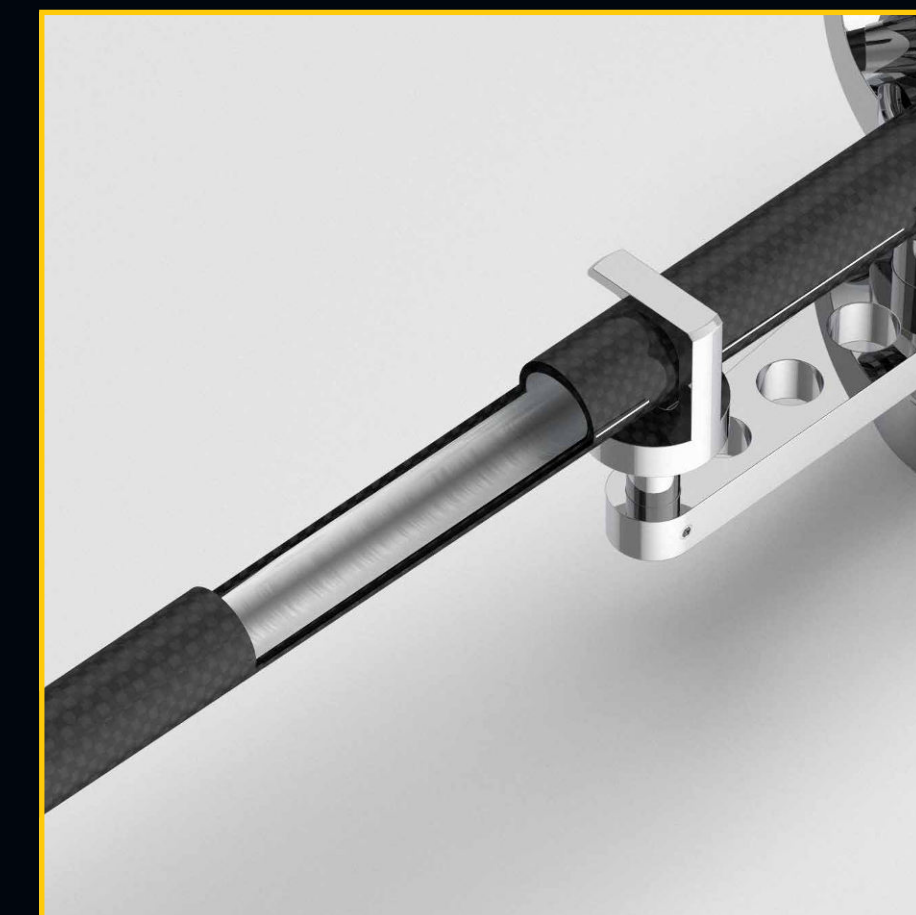
Tonearm Tube Design

STANDARD



Conical Carbon

PREMIUM



Conical Carbon-Aluminium

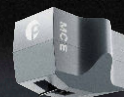
Premium SME-standard Headshells

Detachable headshells have the advantage that you can use multiple cartridges, depending on the sound character you desire. You can also fine-tune the sound character by using different headshell materials.

As standard, we ship our s-shape tonearms with our Aluminium Signature Headshell, resulting in the highest possible effective mass that works best with low compliance cartridges. Carbon and Wood Signature Headshells are available separately to lower the total effective mass of the tonearm, which make them ideal choices for mid and high compliance cartridges.



Discover unparalleled sonic depth...



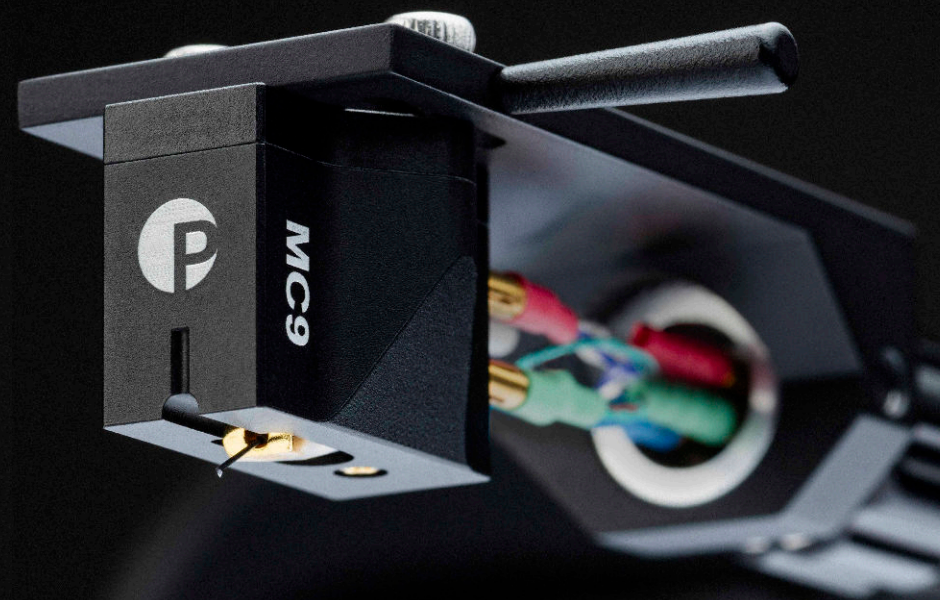
MCE
Fast and lively sounding
moving coil cartridge



MC3
Dynamic & transparent
Sound performance



MC9
Linear, refined performance
for all types of music



Pro-Ject Audio Systems
a Division of Audio Tuning Vertriebs GmbH

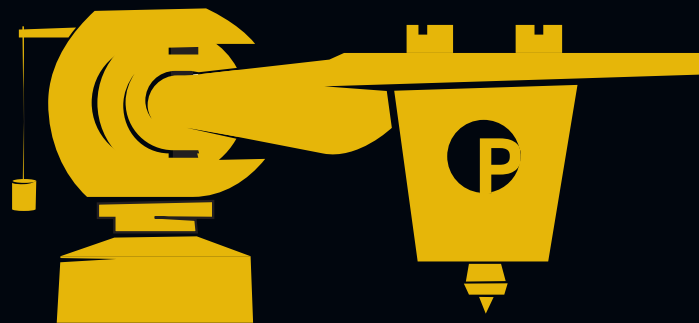
Margaretenstraße 98
1050, Vienna, AUSTRIA

Headquarter & Logistics:
Wirtschaftspark A5 Mistelbach/Wilfersdorf
Analogweg 1, 2130 Mistelbach, AUSTRIA

www.project-audio.com
[instagram.com/projectaudiosystems](https://www.instagram.com/projectaudiosystems)
www.facebook.com/PJ.Audio.Systems

Technical data and pictures without engagement.
Printed in Austria by Riedel druck.

...and unleash the full potential.



**HI-FI STEREO
SINCE • 1991**

MADE IN EUROPE